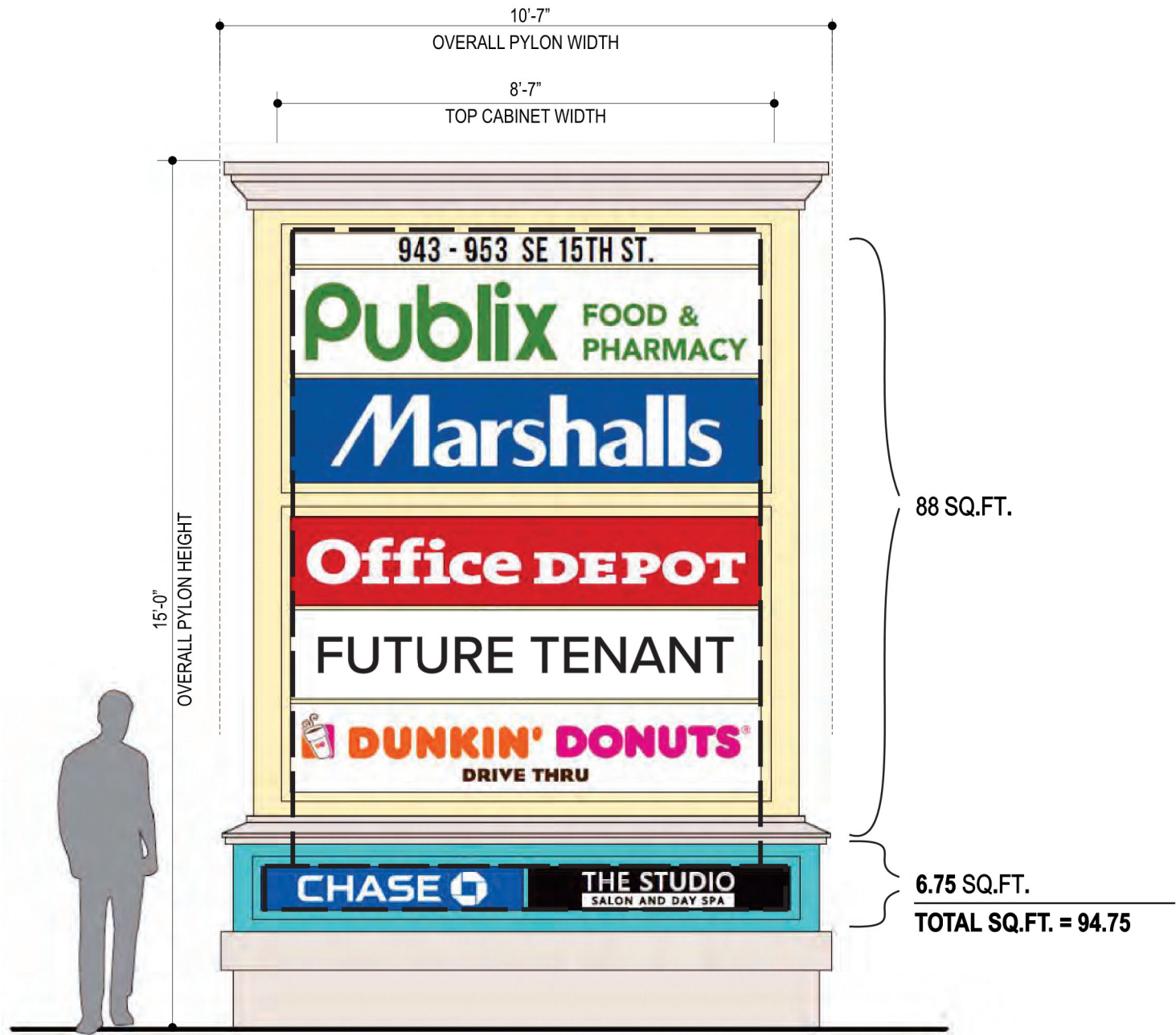


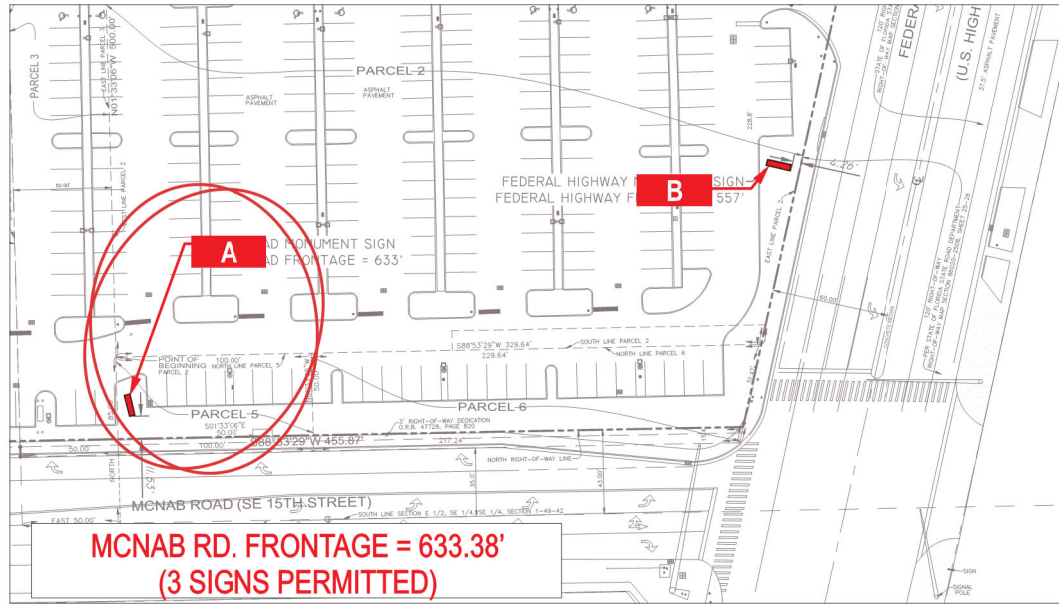
A MAIN SITE ENTRY MONUMENT - E. McNAB ROAD

Sign Type	Description	Area	Qty.	Existing Sq. Ft.	Allowable Sq. Ft.	Illuminated
A	MONUMENT SIGN	15'-0" x 10'-7"	1x	94.75 SQ.FT.	150 SQ.FT.	YES

NOTE:
REFERENCE SIGNAGE CRITERIA ON PAGES 2 & 3 FOR ALLOWABLE
LOGOS, FONTS, & COLORS



A ELEVATION DETAIL - E. McNAB ROAD
SCALE: 3/8" = 1'-0"



STREET FRONTAGE = 633' McNAB RD.
PERMITTED NUMBER OF SIGNS = 3x
EXISTING NUMBER OF SIGNS = 1x
PERMITTED MAX SF OF SIGNS = 150SQ.FT (EACH)
314.69 SQ.FT. TOTAL



A VISUAL
SOLUTIONS
COMPANY.

7440 Fort Smallwood Road
Baltimore, Maryland 21226
800.854.0568

PROJECT TITLE: ECHO REALTY - POMPANO PLAZA		
ORDER TITLE: ECHO REALTY - POMPANO PLAZA		
CITY POMPANO	COUNTY	
STATE FL	CODE ZIP 33062	
DRAWING DATE 06/17/25	GABLE REP JEC	PROJECT MGR. KL



ENGINEER OF RECORD SIGNATURE/DATE:

REVISION HISTORY			
NO.	DATE	PREV DRWG	DESCRIPTION

All designs indicated in these drawings are the property of Gable. All copyrights reserved. No copies, transmissions, reproductions or electronic manipulation of any portion of these drawings in whole or in part are to be made without the express written permission of Gable.

PRODUCT TYPE:
MONUMENT SIGNS

DRAWING TYPE:
COMPREHENSIVE SIGN PLAN

PROJECT NO.	TASK NO.	QTY.
100966	264425	1x
DWG. NO.		SHEET
14783SR		7 OF 24

AAC

PZ25-30000002